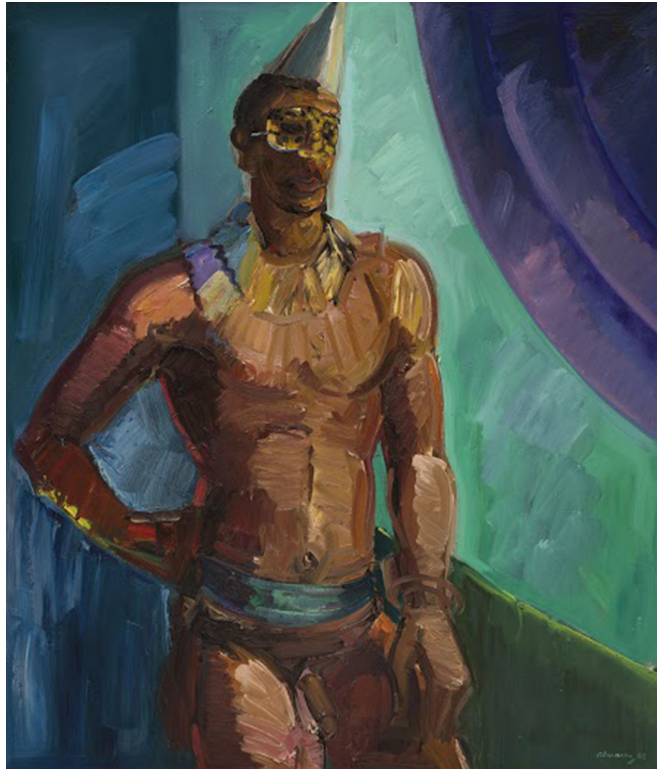


FOR IMMEDIATE  
RELEASE



Carlos Almaraz, "Naked Jester", 1989, oil on canvas, 49 1/2 x 43 1/2 inches (framed),  
Dr. Eugene Rogolsky Collection. Courtesy of Brian Forrest.

**LOS ANGELES** – USC Fisher Museum of Art is pleased to announce *A Generosity of Spirit: Celebrating the Gift of Eugene Rogolsky, MD*, on view September 13 – December 3, 2016.

*A Generosity of Spirit* contextualizes the web of inspiration that motivated a pioneering Beverly Hills AIDS research clinic doctor, Eugene (Gene) Rogolsky, as he accumulated works of art. It hints at the personal and professional relationships he has developed over time, as well as the sociocultural ambience that prevailed in the 1980s, when he was most actively engaged in collecting. Tim Wride, curator of *A Generosity of Spirit*, says that the Rogolsky Collection “is a collection that is populated by works done by artists who were patients, patients who were friends, and friends who became legends.”

Dr. Rogolsky’s collection is a complex and introspective one, where photographs, prints, paintings, and sculptures range from sacred to profane, local to international, cerebral to prurient. Little-known student works are side by side with some of the more iconic works of the past 40 years. While the collecting pattern is mostly a single work per artist, there are some who make their mark in the collection by a wider range of examples, Carlos Almaraz being one of them. In curator Tim Wride’s words:

“Carlos Almaraz is an artist who Rogolsky first came to know as a doctor, then as a friend, and ultimately as a patron. His holdings of Almaraz’s work span the breadth of the artist’s career—from graduate school to his too-early death at the age of 48. Through Almaraz, he became acquainted with Carlos’s wife Elsa Flores as well as other members of the East LA and Otis School of Art and Design

communities. Works by these artists form another cornerstone of the Rogolsky Collection. Rogolsky's close friendship with influential Chicago gallerist Anne Baruch and with LA-based artist, curator, and educator Henry Klein also gave him entrée to works done by printmakers and photographers from Eastern Europe such as Josef Sudek, Jindřich Štreit, Jindra Víková, Jíří Anderle, Oldřich Kulháněk, and František Drtikol, whose works form another strength of the Rogolsky Collection.”

Selma Holo, director of the Fisher Museum, says that the gift of the Rogolsky Collection to the USC Fisher Museum of Art will build bridges among divergent disciplines. The collection will create new opportunities for audiences to practice the virtue of looking intensely, while shining a light on the art and history of Los Angeles, the collector's hometown.

---

**About the Museum:**

The USC Fisher Museum of Art - established in 1939- is accredited by the American Alliance of Museums. It functions as a center for intellectual inquiry and aesthetic enjoyment in support of USC's goals of research, teaching, artistic creation, and service to society. The Fisher Museum bears special responsibility to link the art in its permanent collections and the art it presents in its temporary exhibitions to all of USC's present and future audiences: to its students, faculty, staff, alumni, and surrounding communities. Fisher Museum offers an array of programming, including lectures, artists' talks, yoga, film screenings, concerts, and poetry readings to enhance and support its exhibitions. Fisher Museum is also proud to be home and working laboratory for the USC International Museum Institute, a think-tank for museum professionals and a division of the USC College.

**Admission is free.**

Located on the USC campus.  
823 Exposition Blvd Los Angeles, CA 90089

**Go Metro!**

USC Fisher Museum of Art is just a few steps away from Metro Expo Line's Expo Park/USC station!  
For current fares and times, go to [www.metro.net/expo](http://www.metro.net/expo).

**Museum Hours:**

Tuesday-Friday 12-5pm  
Saturday 12-4pm

**Media Contact:**

Selin Camli  
[scamli@usc.edu](mailto:scamli@usc.edu)

213-740-4561  
<http://fisher.usc.edu>